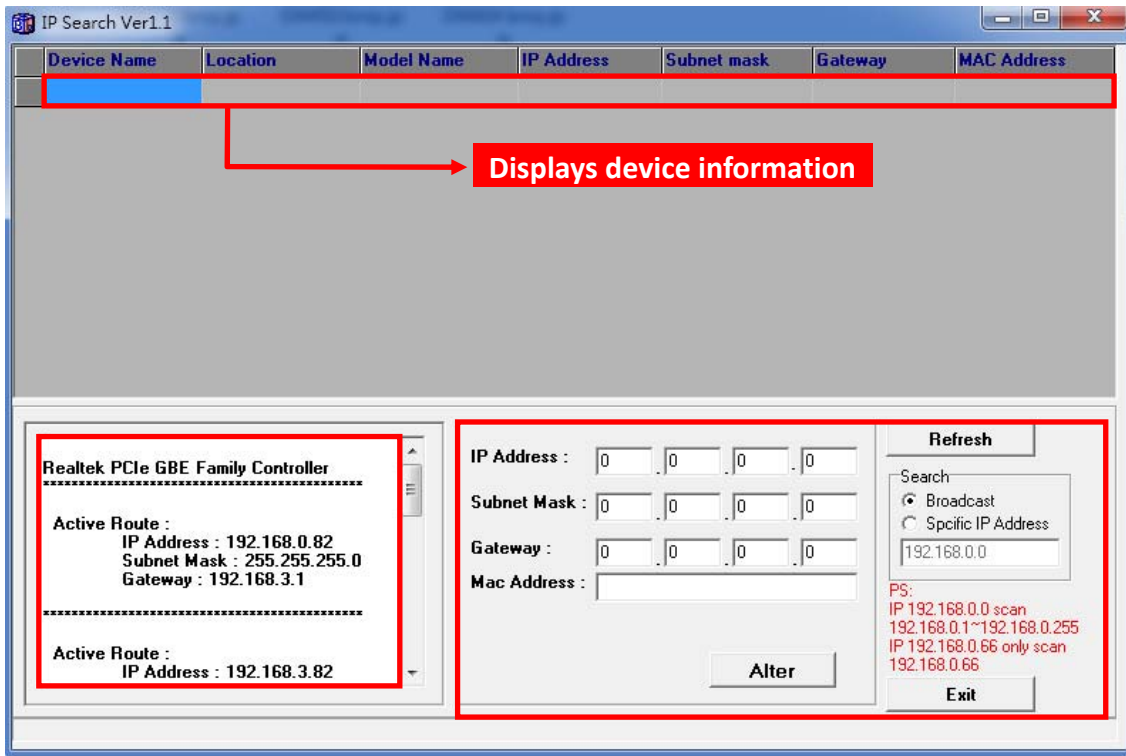


# IP Search Software Manual

## 1. Software Interface



(Fig 1)

### I . Left side of Fig 1:

**Realtek PCIe GBE Family Controller:** Displays the NIC model number on the device.

**Active Route:** Displays the current router settings.

**IP Address:** IP address.

**Subnet Mask:** Subnet Mask.

**Gateway:** Default Gateway.

### II . Right side of Fig 1:

**Refresh:** The refresh button.

**Search:** You can choose to search for all IP or a specific IP.

**Broadcast:** Broadcast search all IP

**Specific IP Address:** Search for a specific IP

**For example:** Enter 192.168.0.71 to search for this IP only; the software will search through 192.168.0.1~192.168.0.255 if you enter 192.168.0.0

**Alter:** Confirm to modify

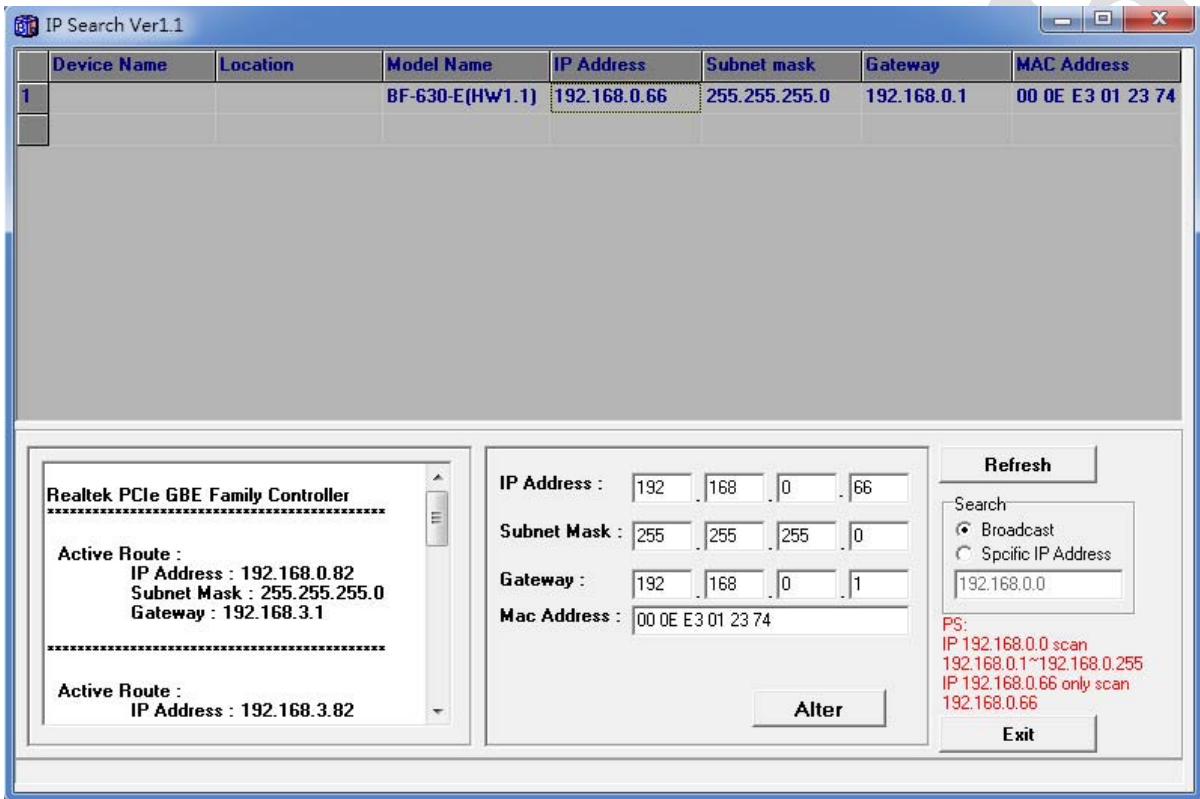
**Exit:** Exit

**Searchable product types:** BF series card readers/fingerprint machines, TCP/IP converters and DIO controllers.



## 2. Using IP Search

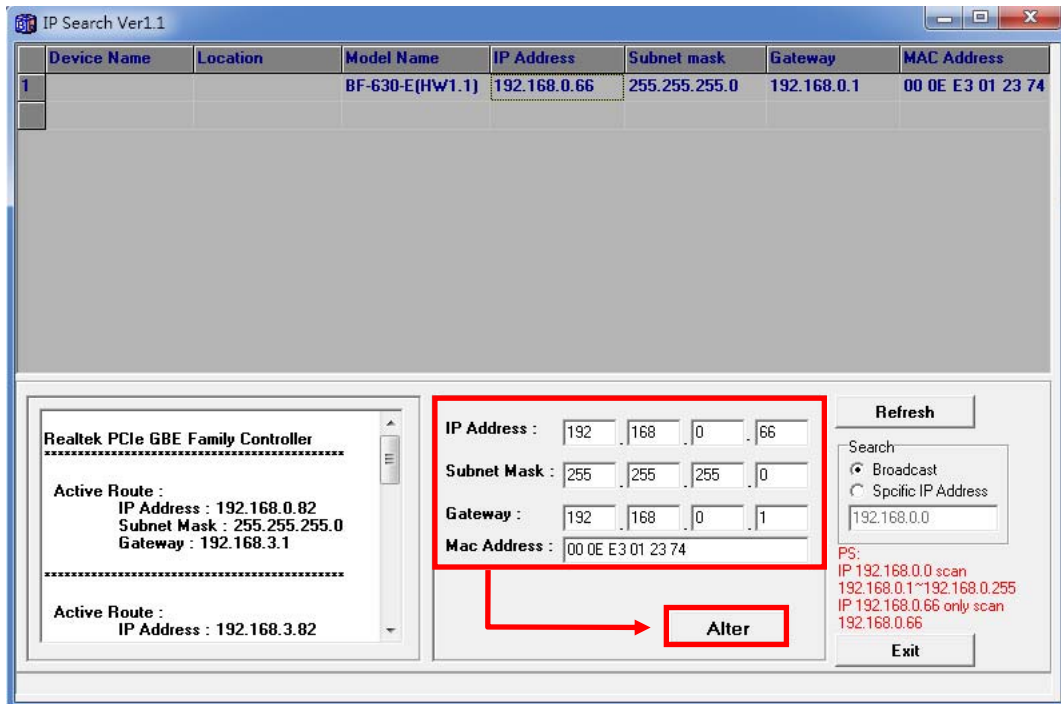
I . Double click “IP Search” icon on your desktop ; then click Refresh button to search for BF series devices and TCP/IP converters available on the network. Any device found will be displayed with its Model Name, IP Address, Subnet Mask, Gateway and MAC Address in the window, as shown in (Fig 2).



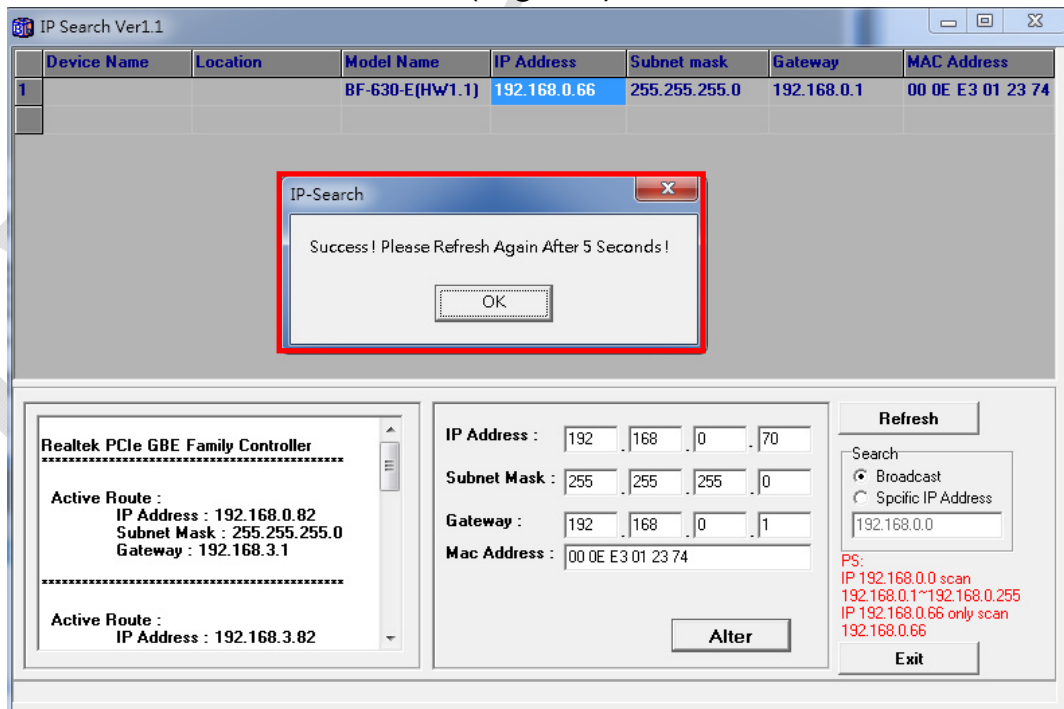
(Fig 2)

### 3. How to change device settings

I . Click “IP Search” and select any device found; enter the new settings for IP Address, Subnet Mask and Gateway, and then press Alter. A message column will pop up to inform you that the settings have been successfully modified. Click “OK” to close the message column and complete the setting modification , as shown in (Fig 3-1) and (Fig 3-2).

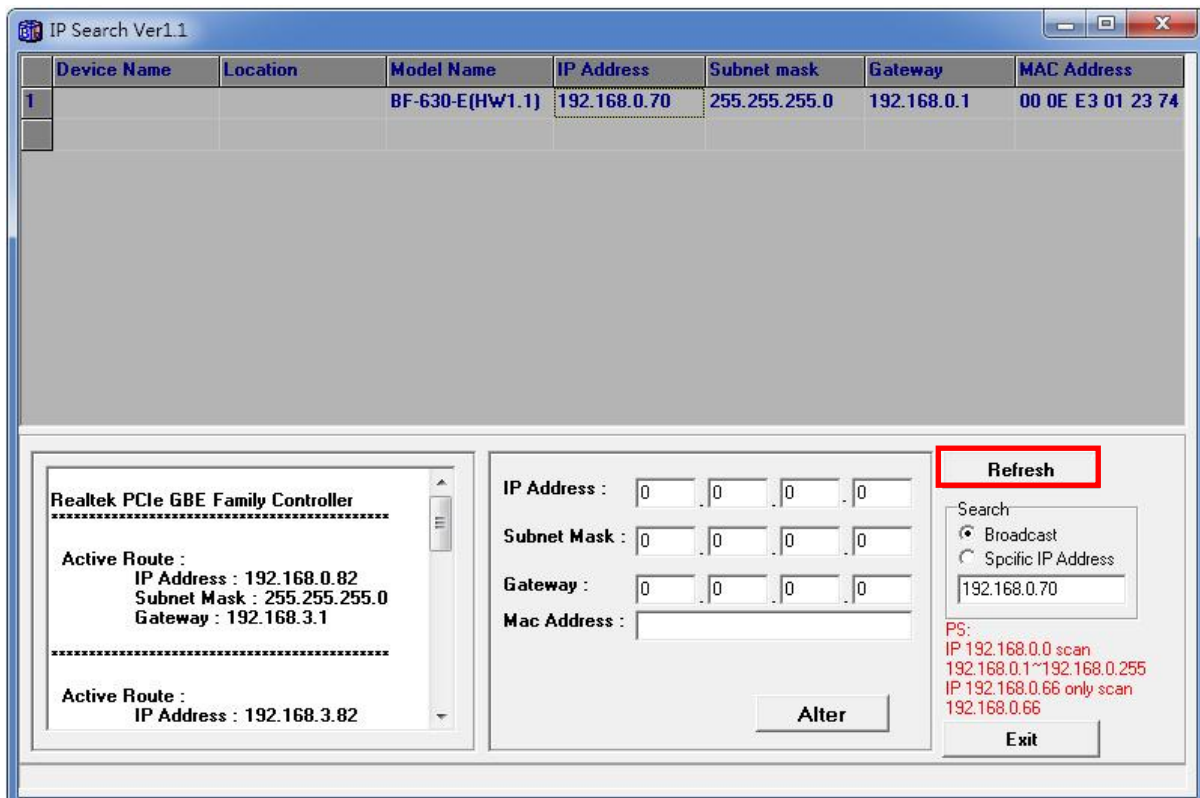


(Fig 3-1)



(Fig 3-2)

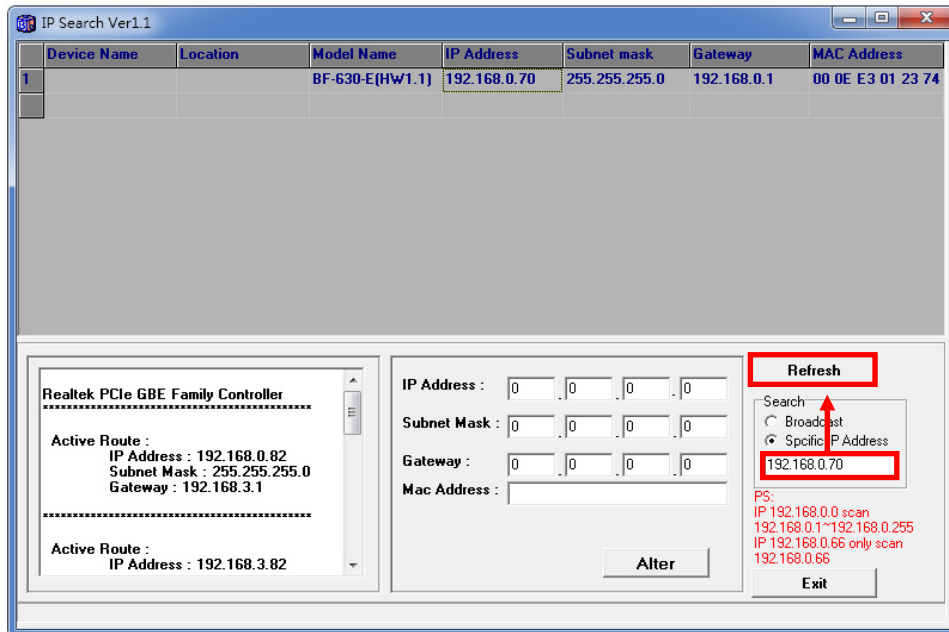
II . Click “Refresh” to search again. The modified IP, Subnet Mask and Gateway will appear in the window, as shown in (Fig 4).



(Fig 4)

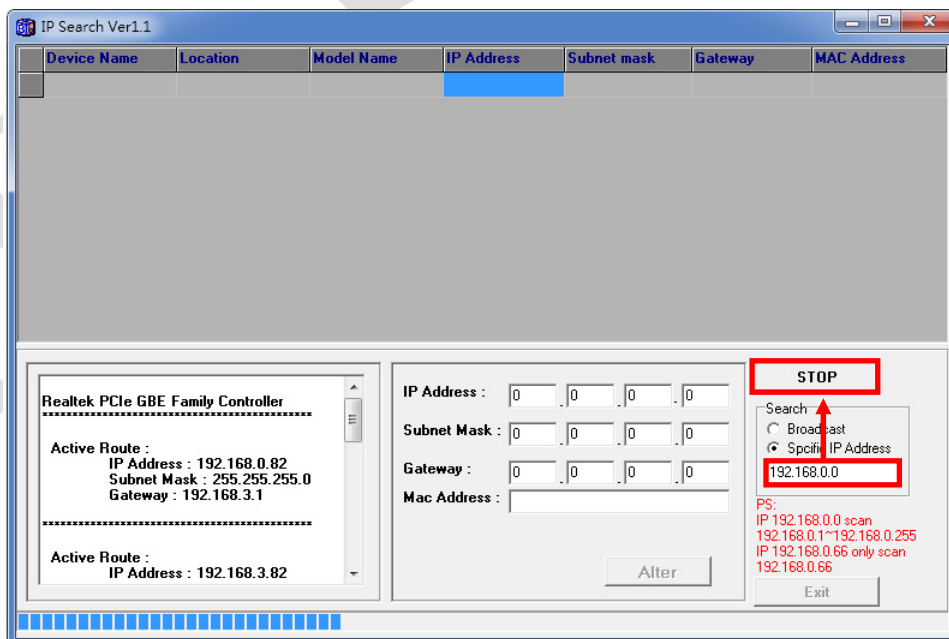
#### 4. Searching for a specific IP

I . To search for one device with a specific IP address, Click “Specific IP Address” at the bottom-right hand corner and enter the IP address . Click “Refresh” button to search for the device on that IP address, as shown in (Fig 5) .



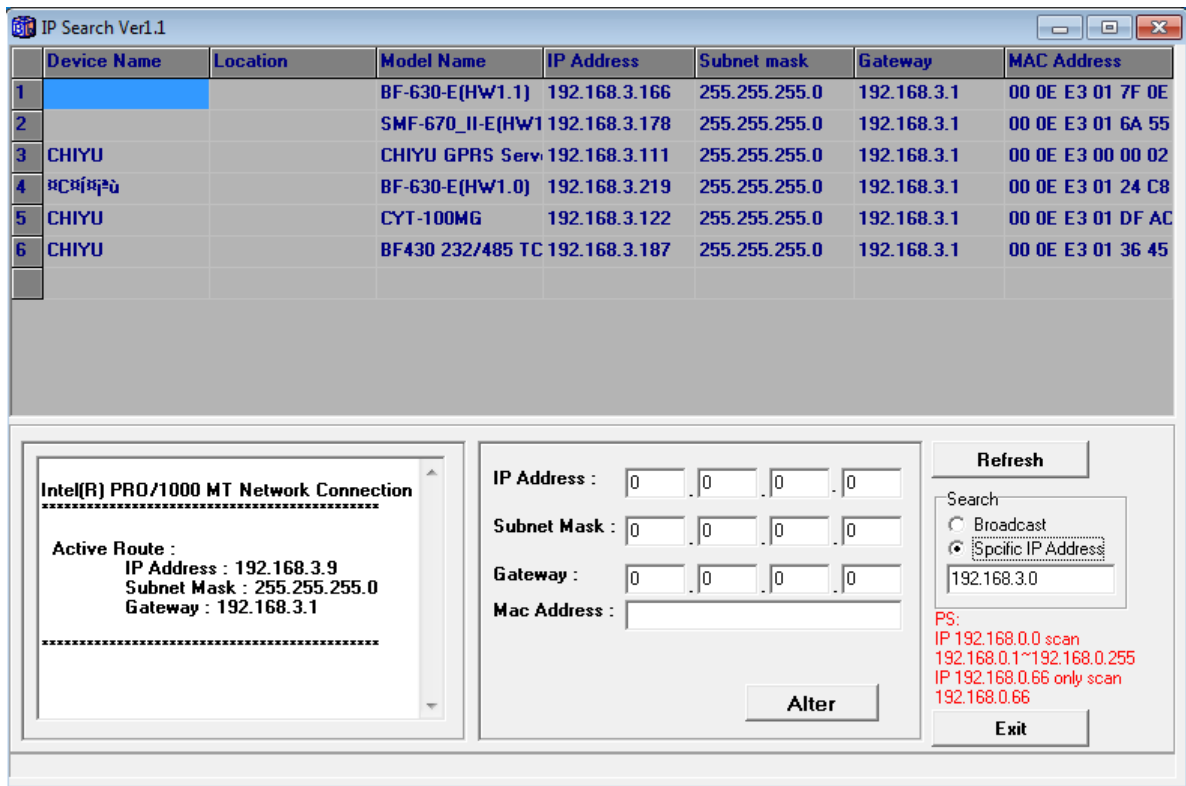
(Fig 5)

II . To search for specific IP segment, select “Specific IP Address” and specify the segment (e.g. enter 192.168.0.0). Click “Refresh” to search for all devices in the selected segment, as shown in (Fig 6) .



(Fig 6)

III. When the search is complete, it will display all devices ,BF series and TCP/IP converters found. Double-click the device to open its webpage where you can enter username and password for setting, as shown in (Fig 7) below.



(Fig 7)